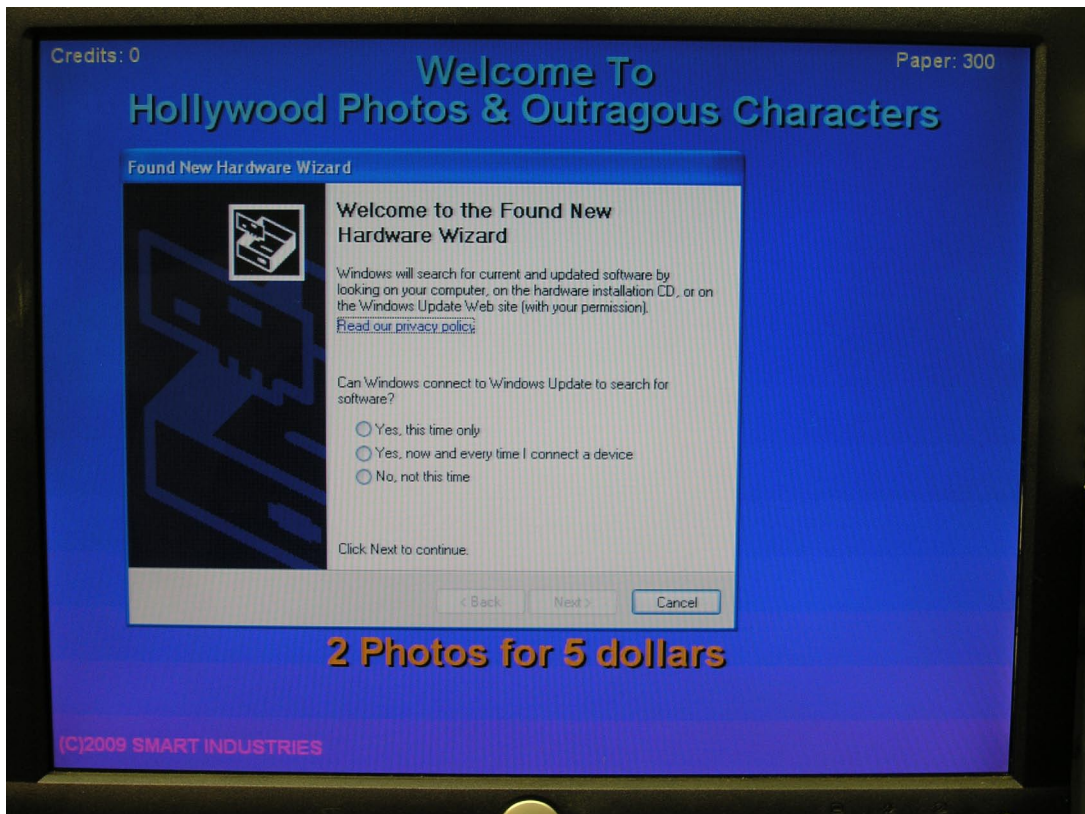


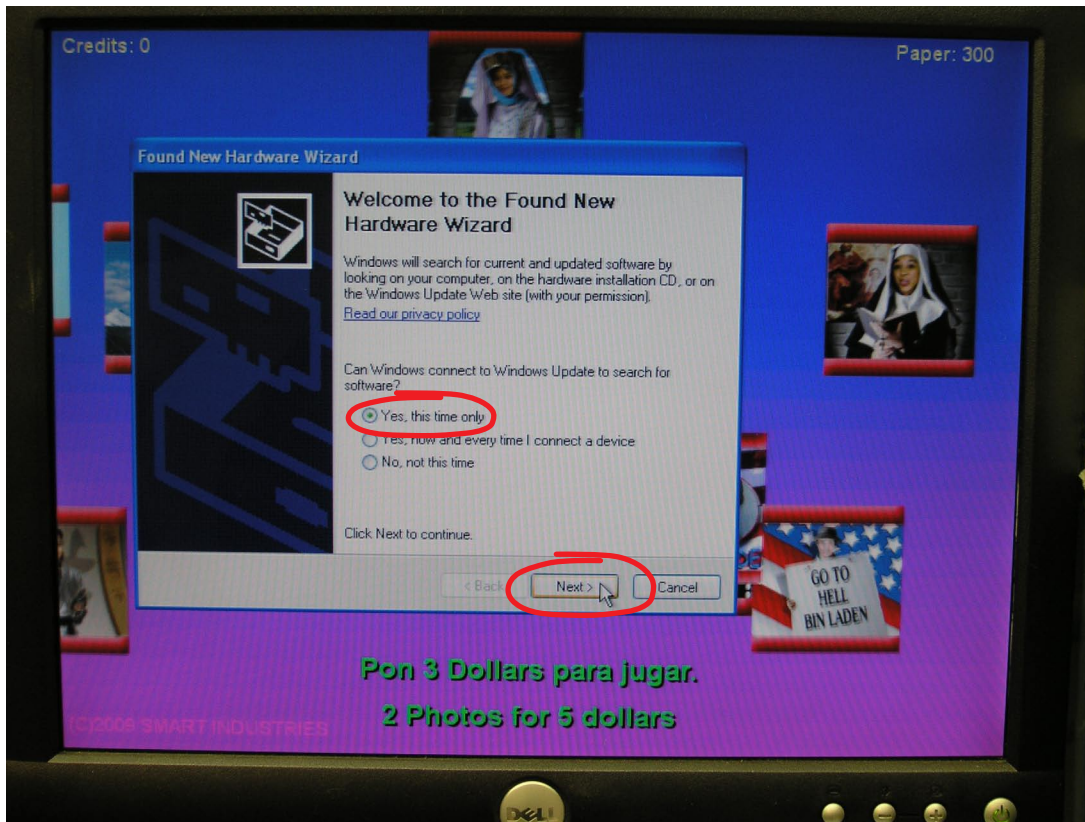
# SMART 3 IN 1 HOLLYWOOD PHOTOS: SETTING UP YOUR SONY DYE SUBLIMATION PRINTER



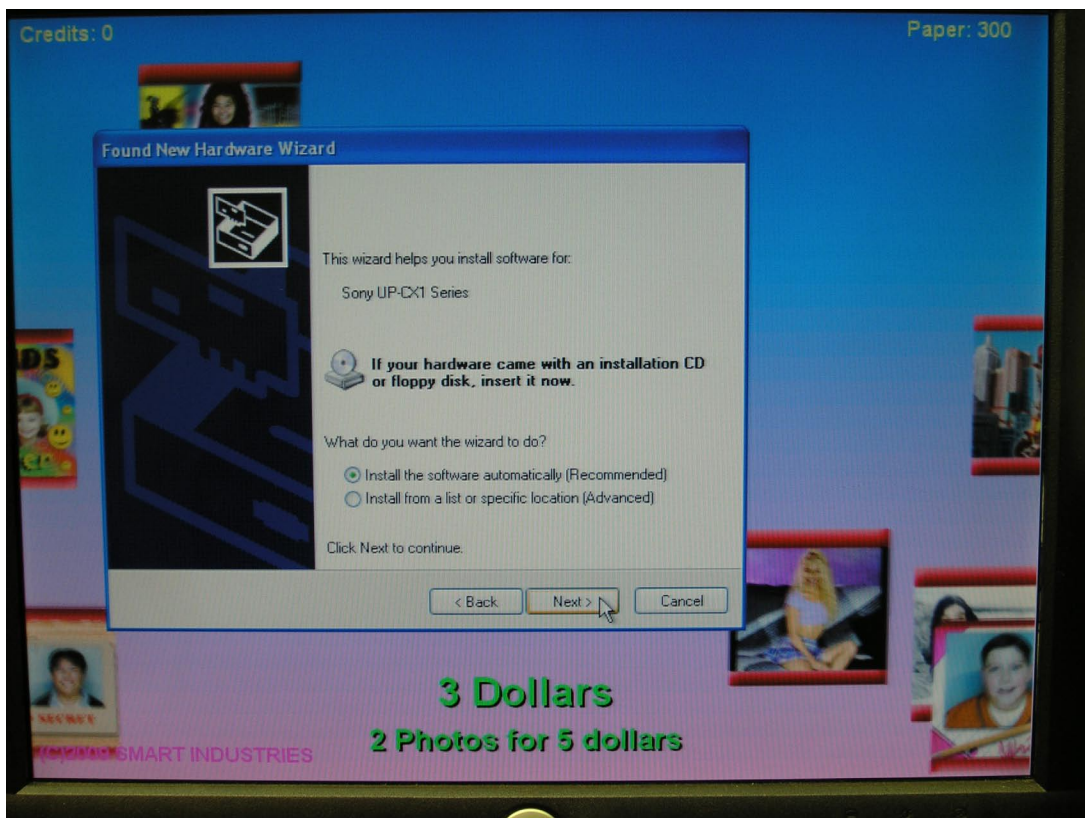
Start up your computer without the printer plugged in. The main photo booth screen should appear. Now plug the printer into the computer via the USB cable that came with the printer.



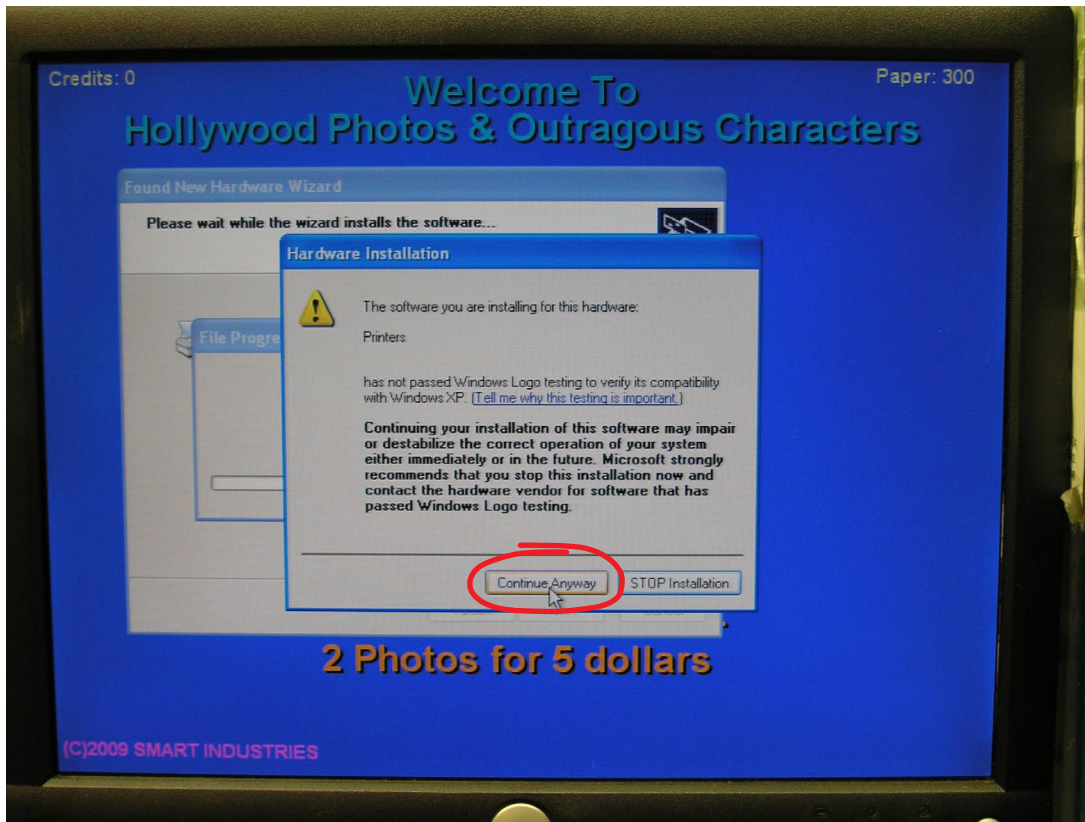
Wait a few seconds and this screen should appear, which lets you know that a new device has been connected.



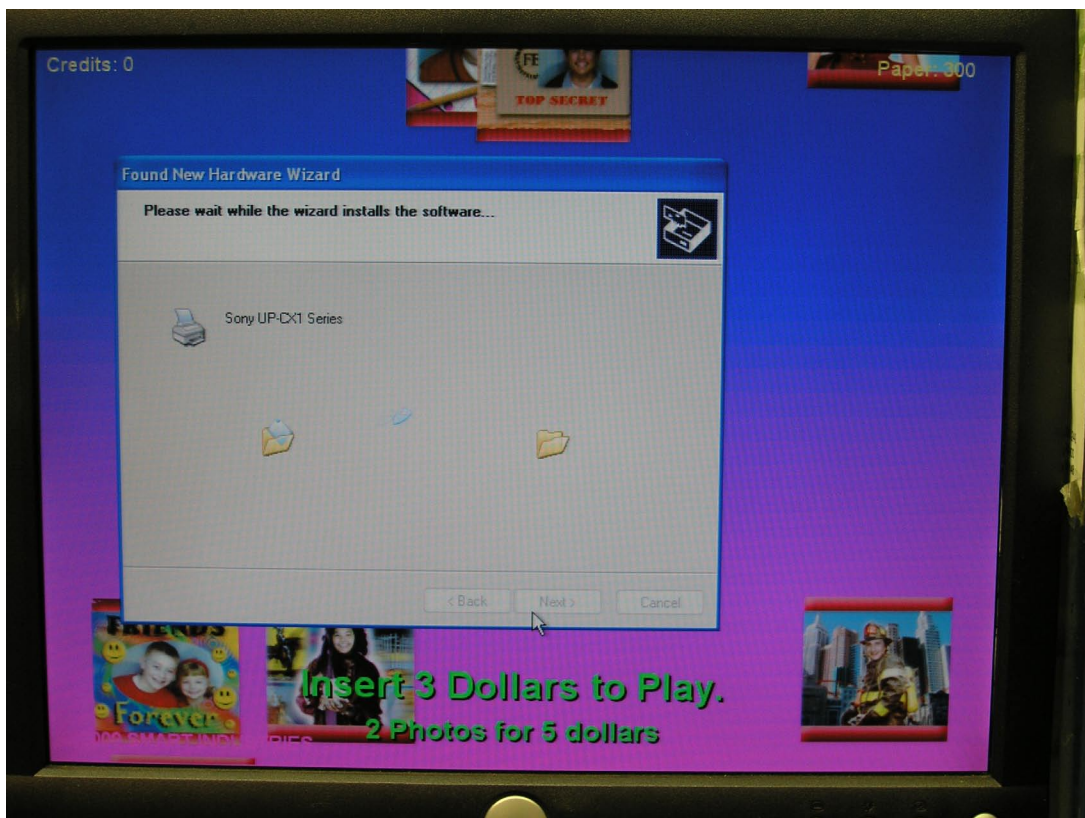
Click the button next to “Yes, this time only”, then click “Next”.



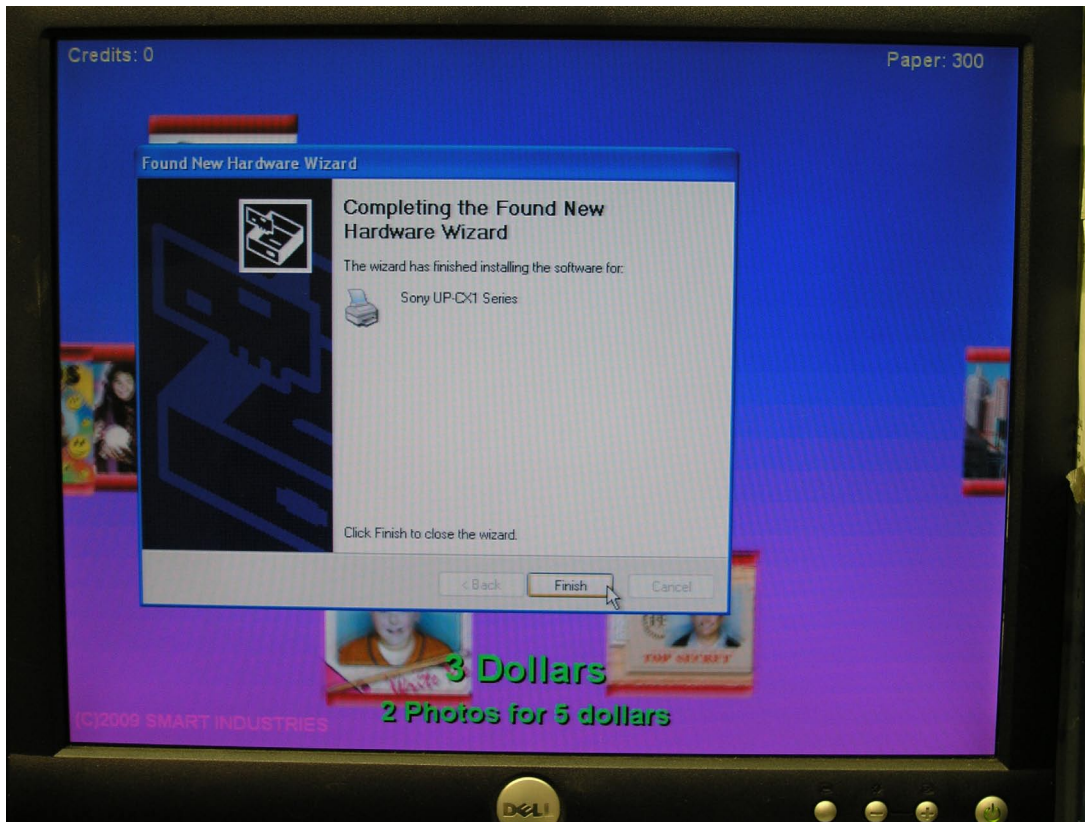
Click the button next to “Install the software automatically”, then click “Next”.



Wait a few seconds, then this screen should appear. It may prompt you to Stop installation, but you need to click “Continue Anyway”.



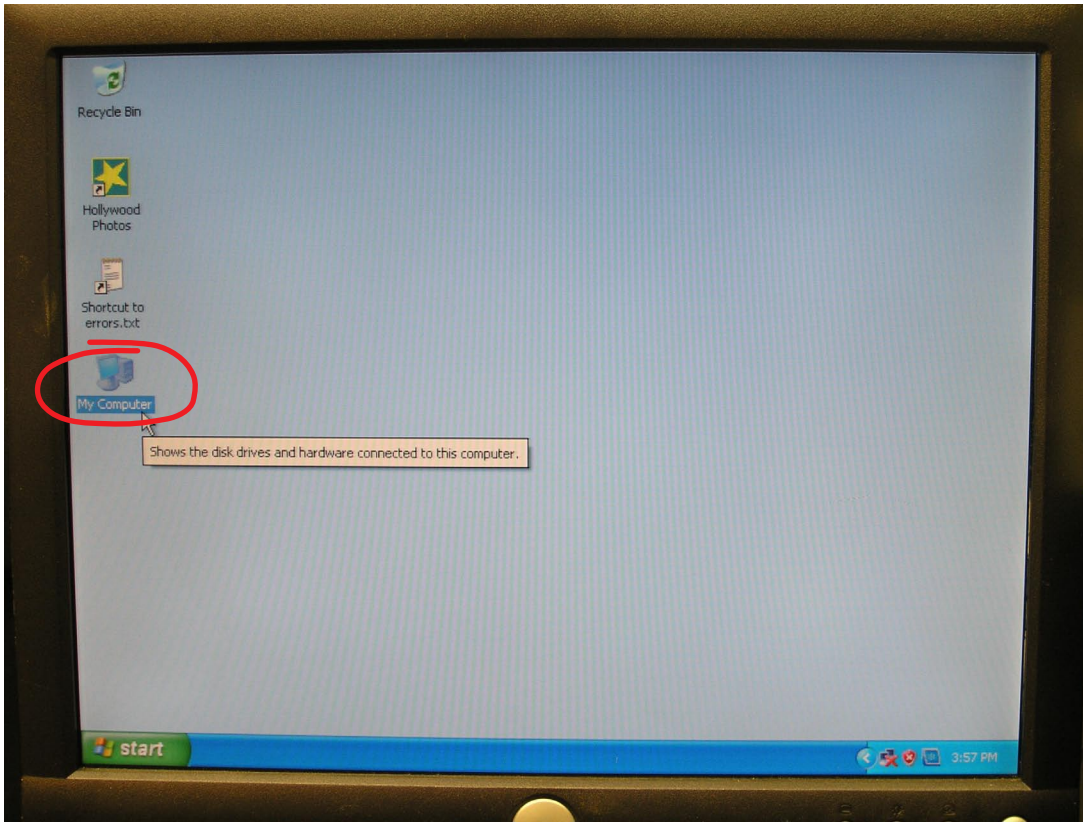
This screen may appear for a few seconds while the computer sets up the printer.



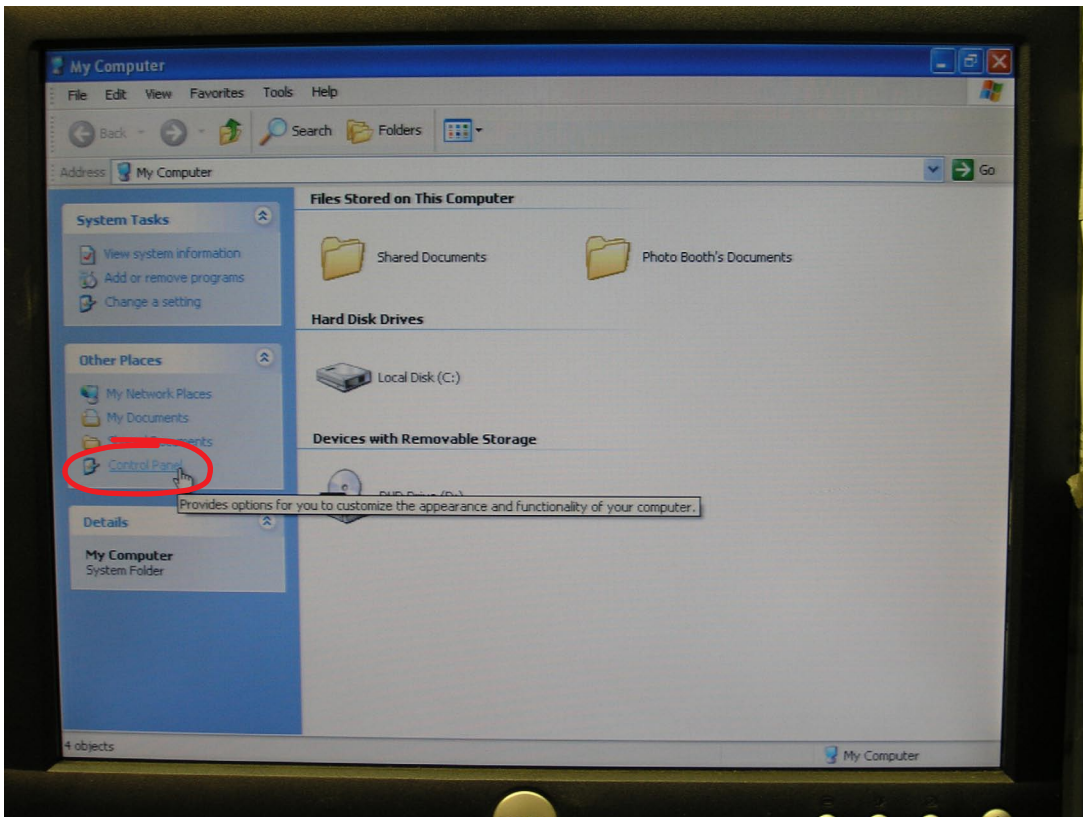
Once you see this screen, click "Finish".



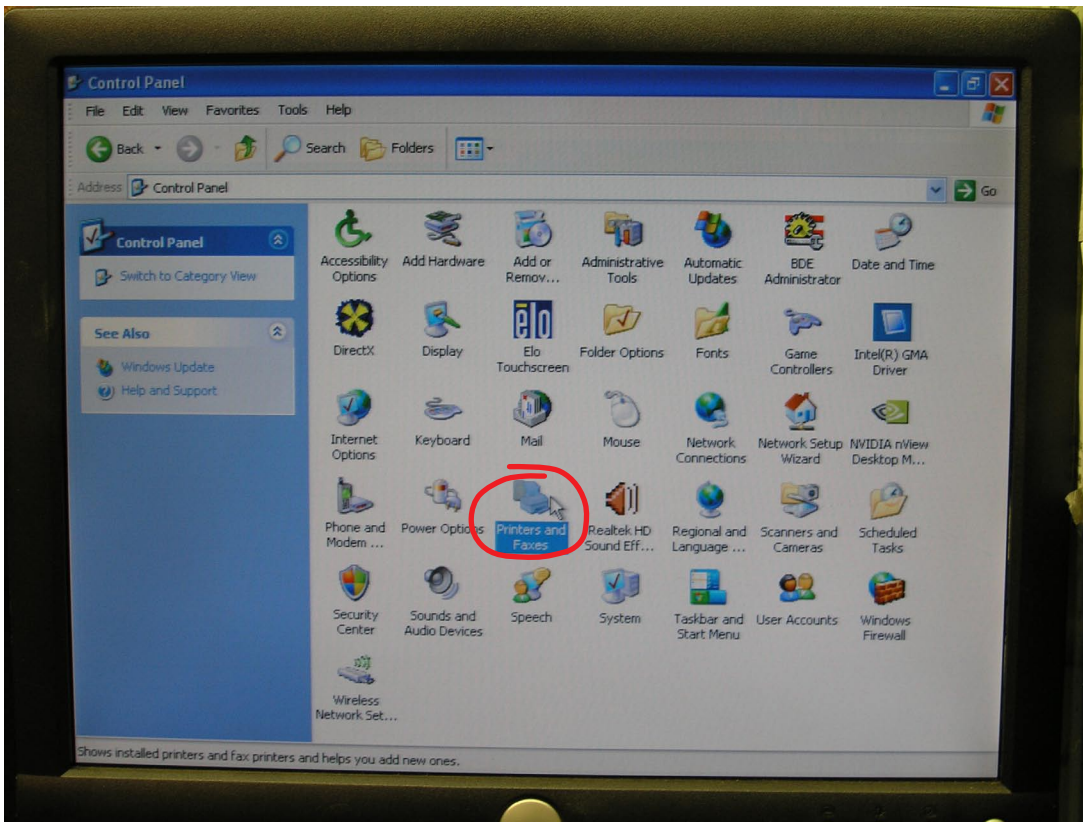
Right-click on the main photo booth screen and choose "Exit".



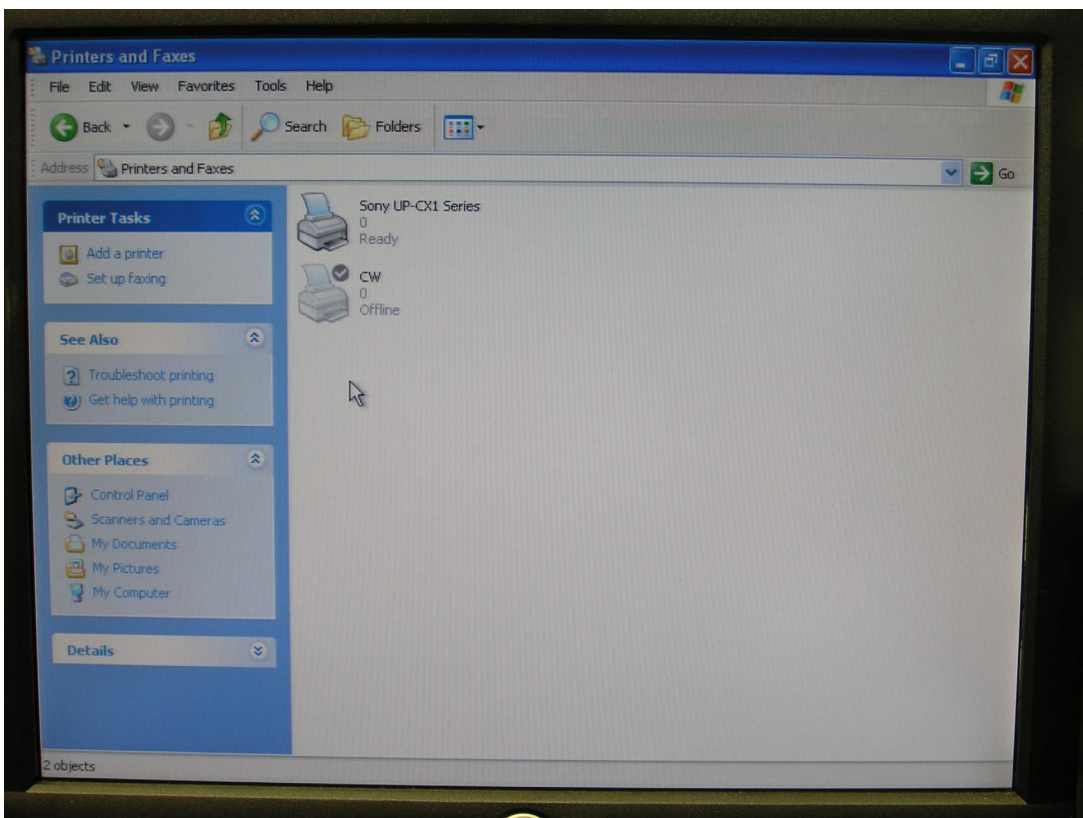
**Double-click the My Computer icon on the computer Desktop.**



**Click "Control Panel" on the list at the left side of the screen.**

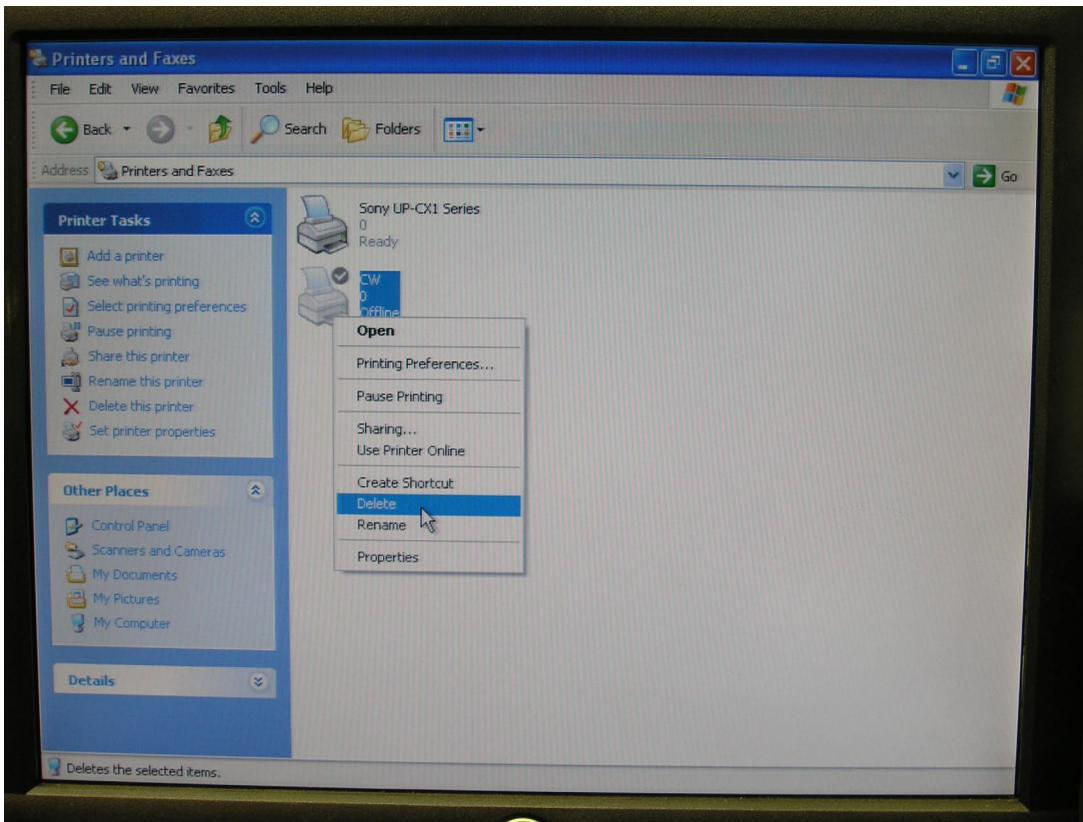


Double-click the “Printers and Faxes” icon on this screen.

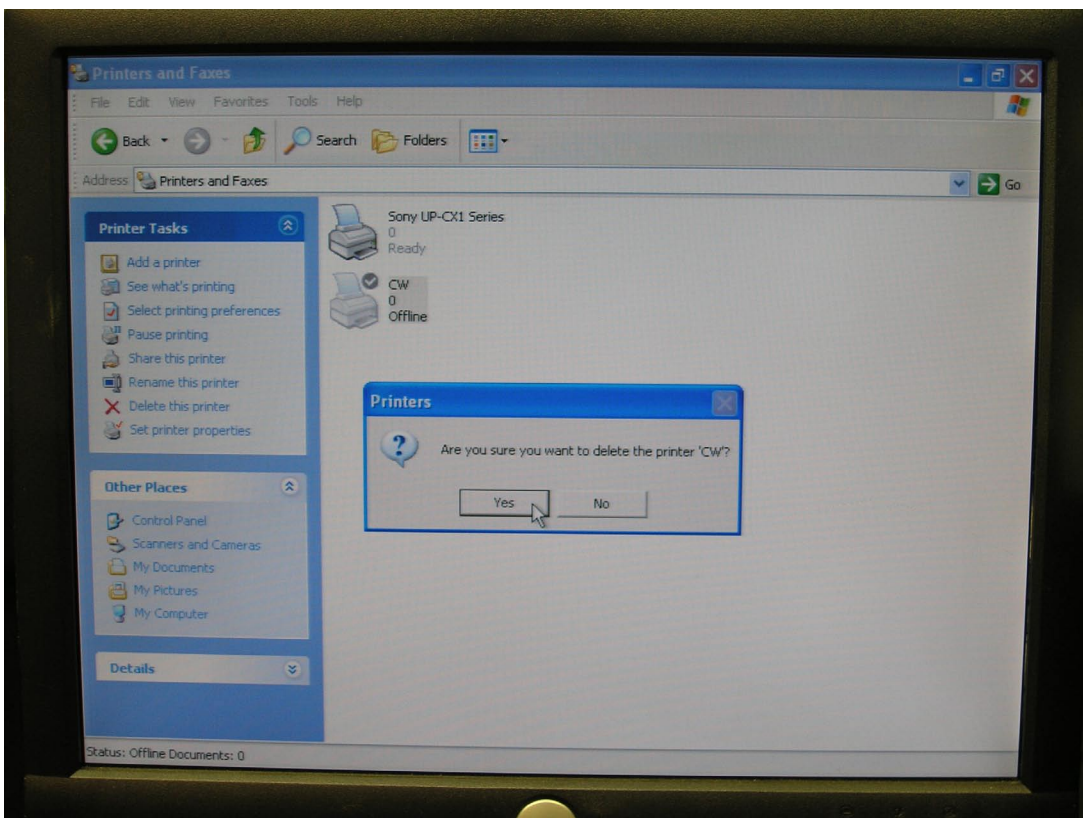


If the next screen looks like this, you’ll need to delete the CW printer by following the rest of the steps.

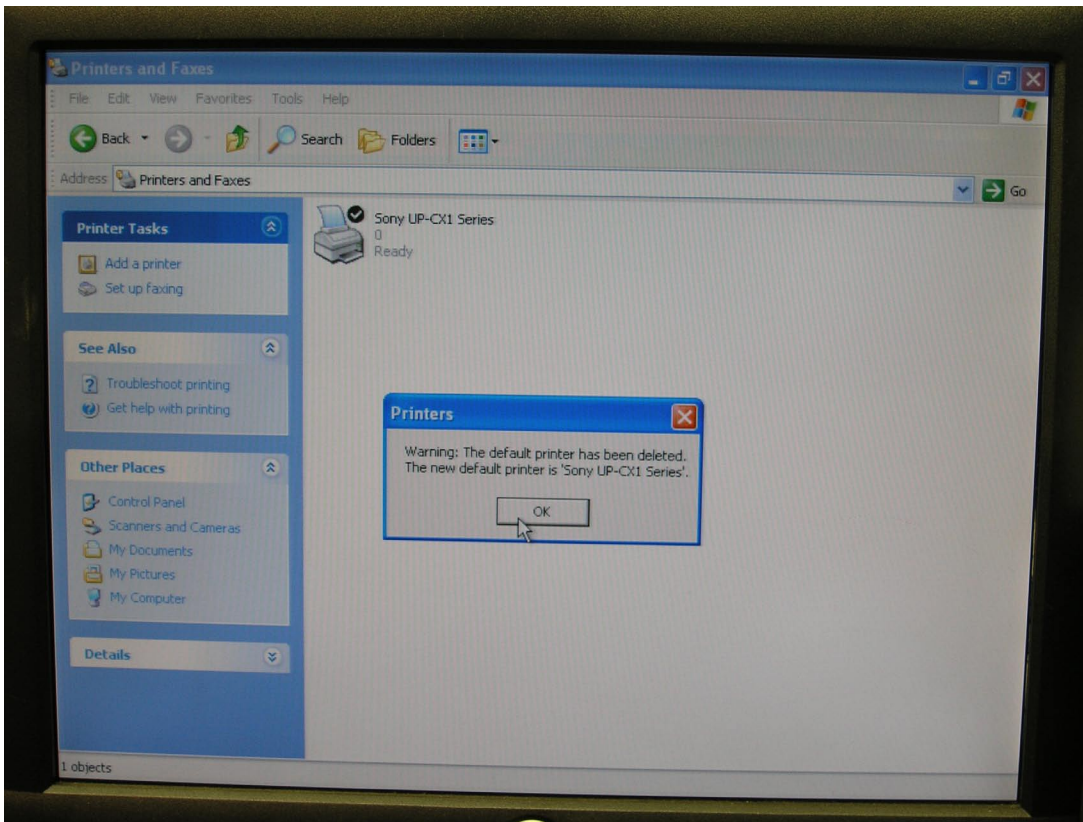
If this screen on your computer only shows the Sony UP Series printer icon, then skip the next 3 steps we show you and go to the one where you need to rename the printer.



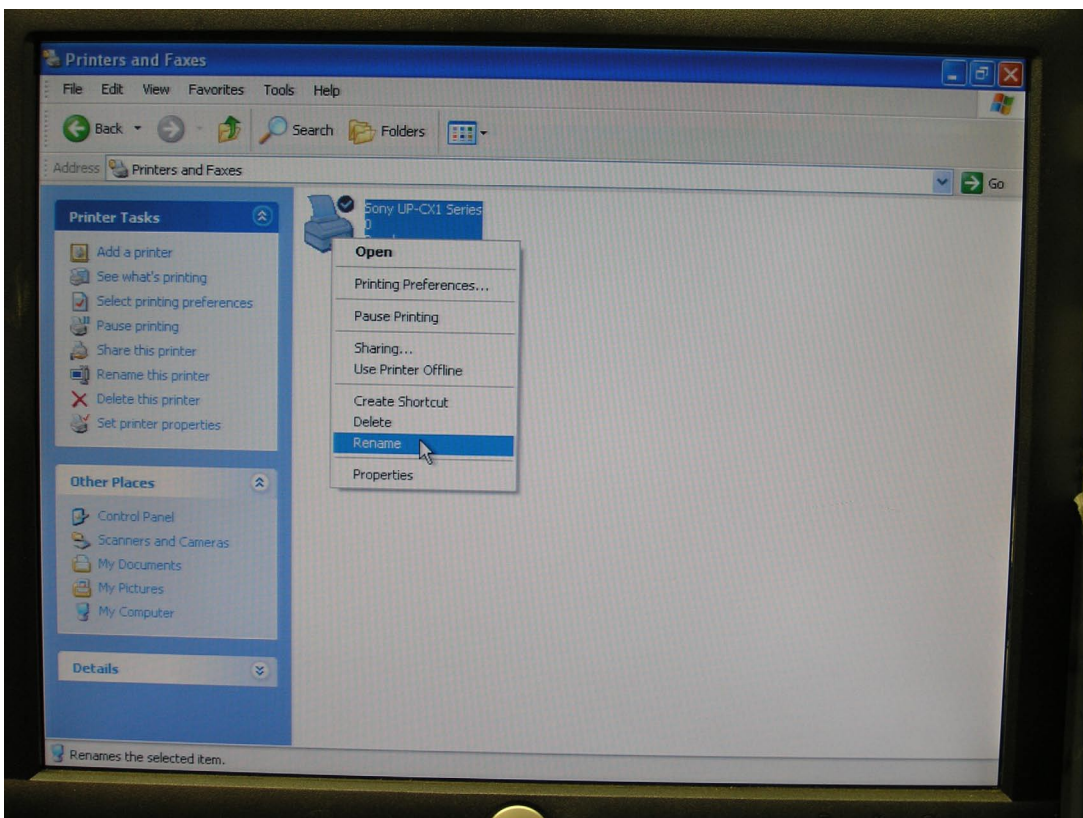
Right-click on the CW printer icon and choose "Delete".



Click Yes to delete this printer.

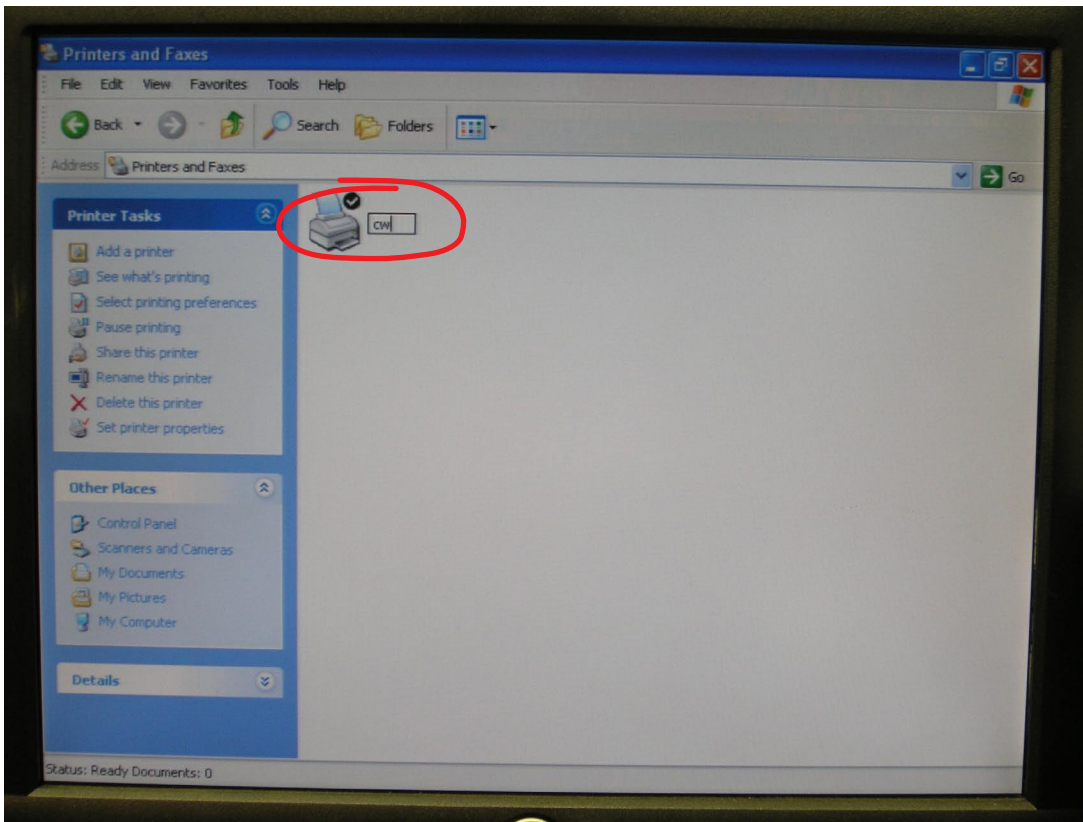


If this box appears, telling you it is resetting your default printer, click OK.

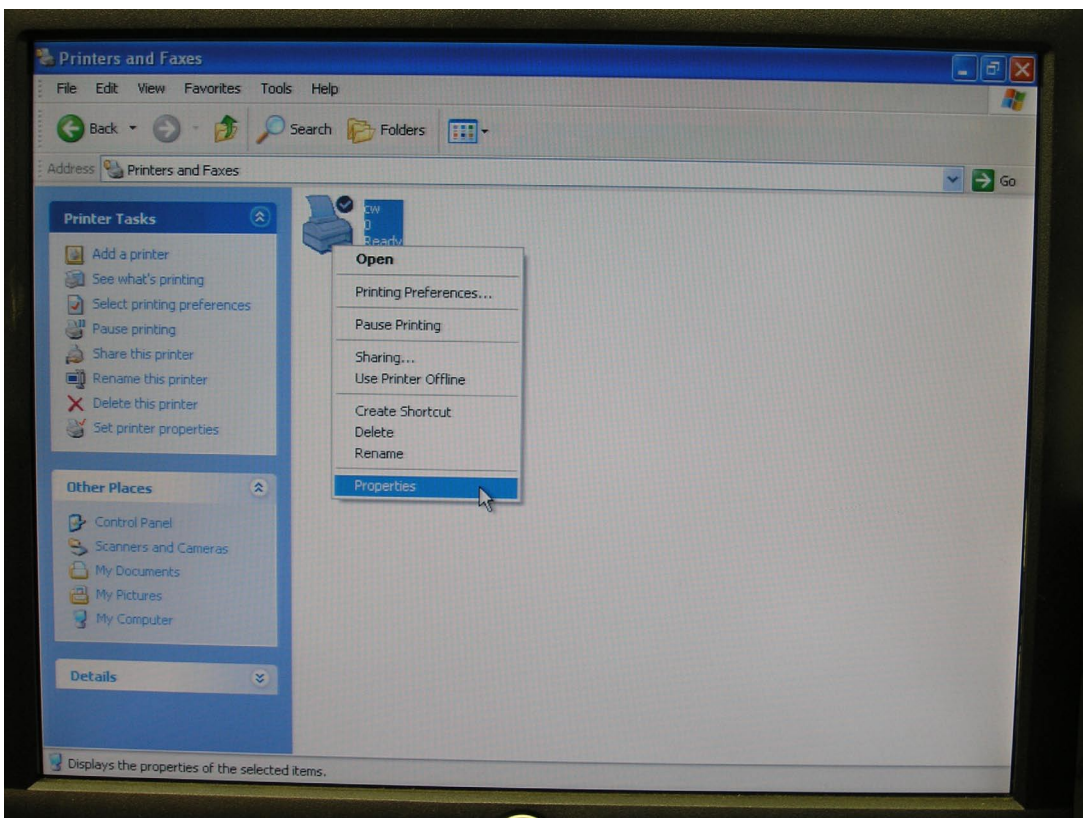


**RENAME PRINTER:**  
Now, right-click on the Sony UP series printer icon and choose "Rename".

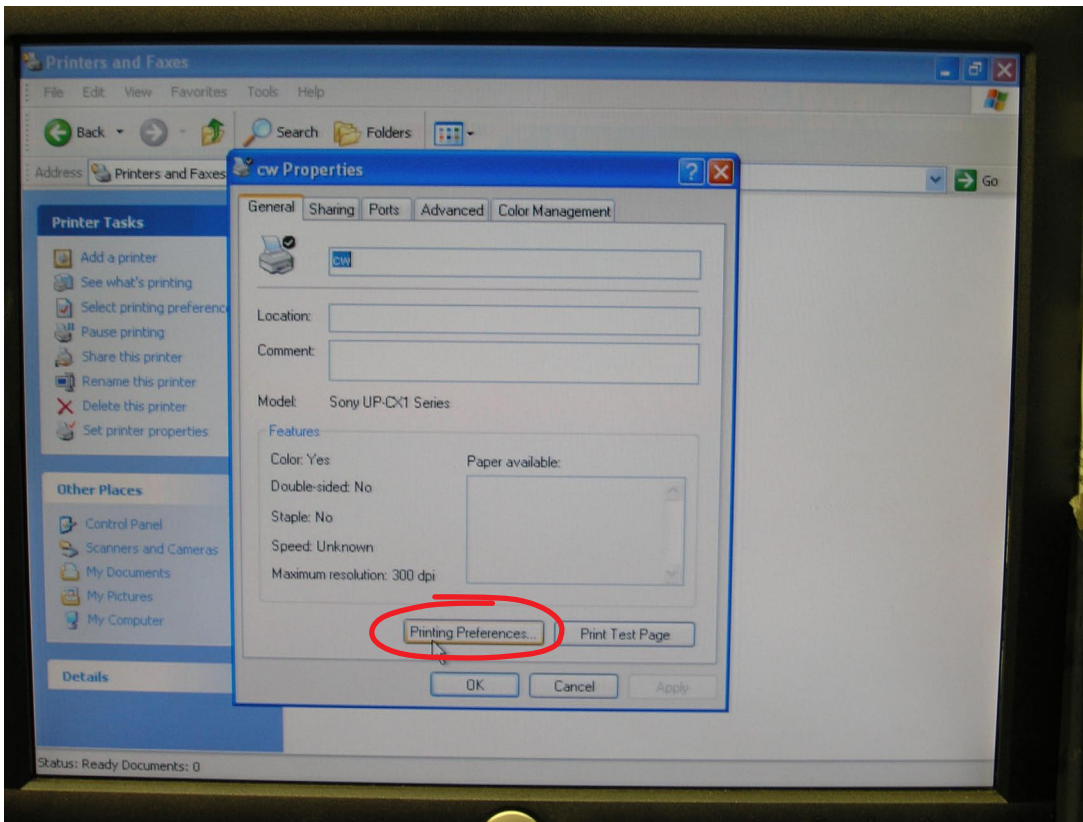




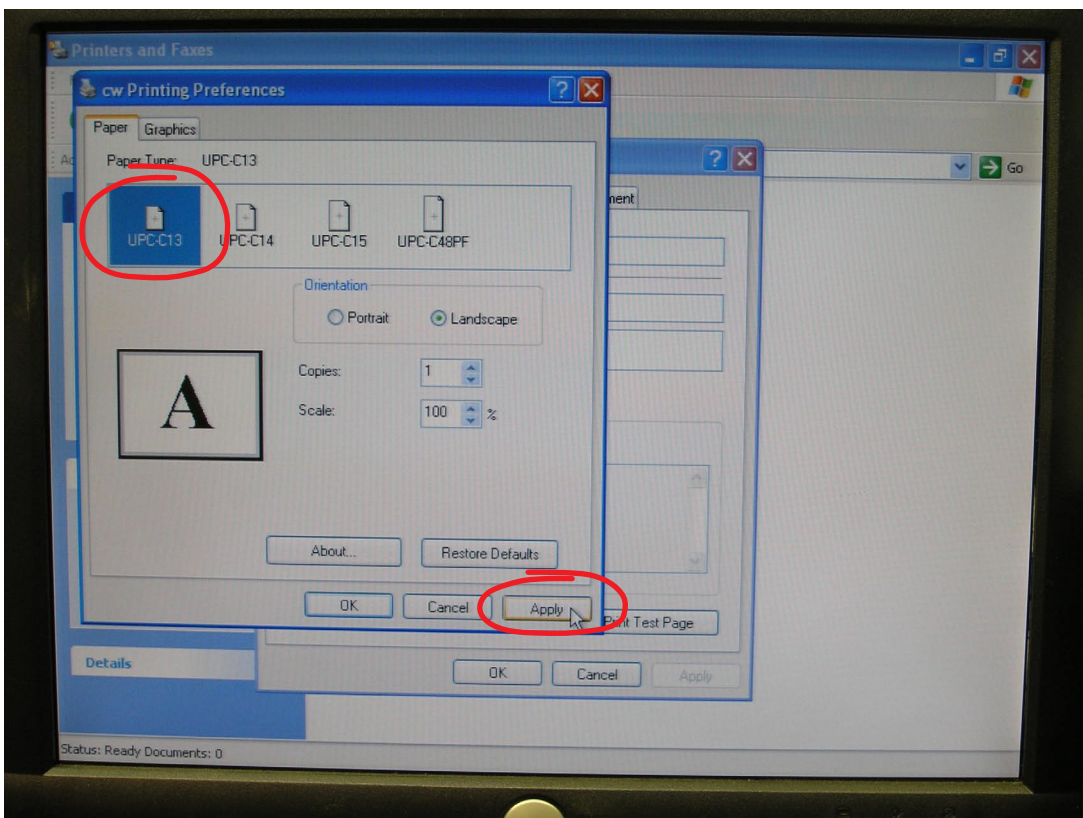
Type in the new name for your printer, "cw" (both lowercase letters)



Now, right-click the cw printer icon and choose "Properties".



When this box appears, click on "Printing Preferences".

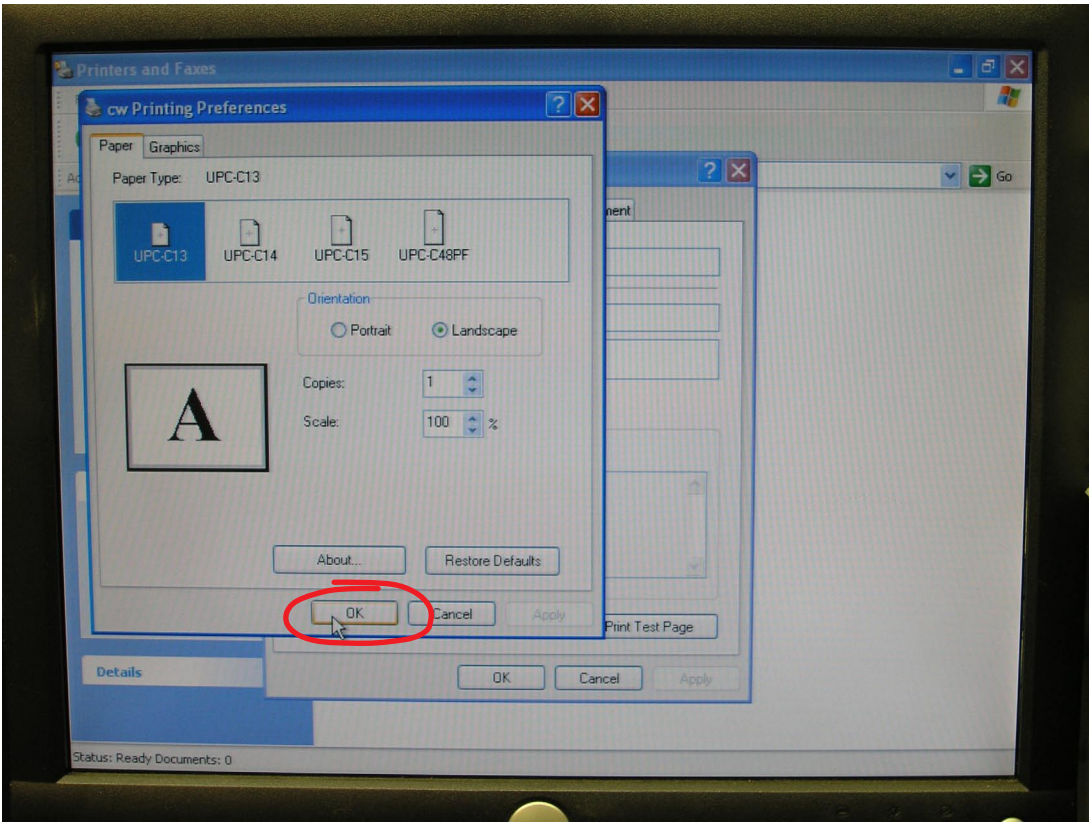


Make sure you select the paper size you are using by clicking the appropriate paper type:

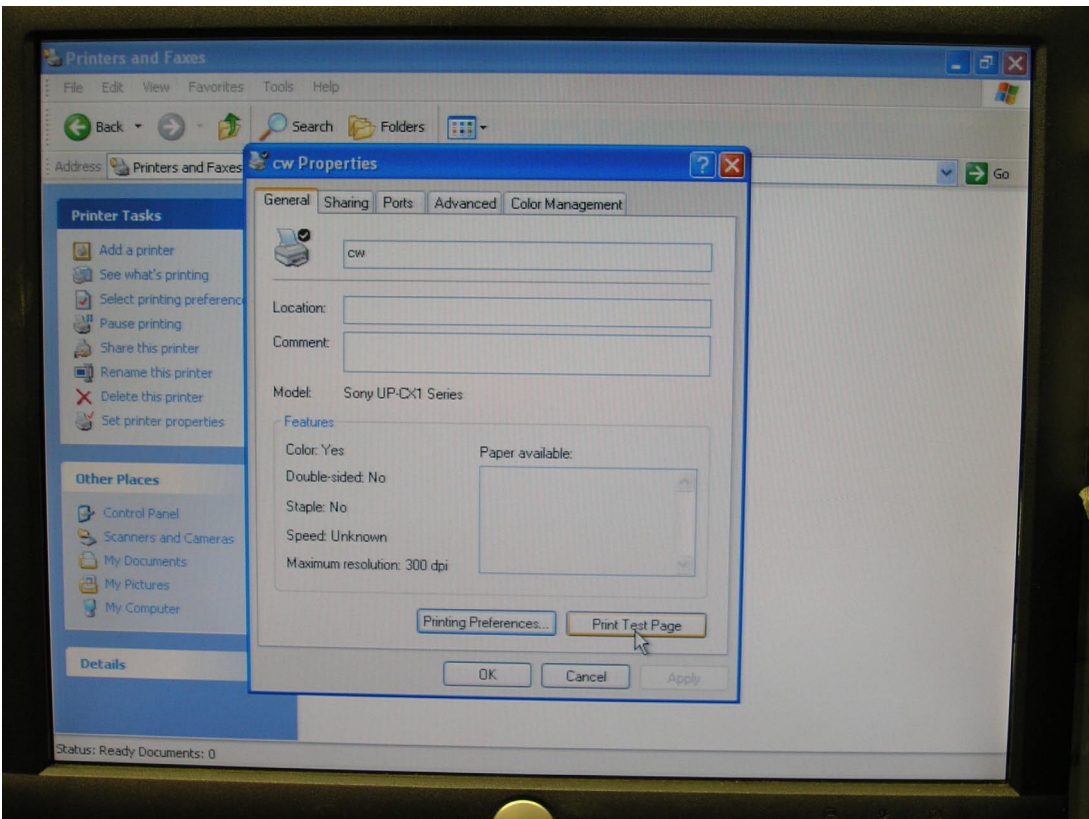
UPC-C13 = 3.5"x5"  
UPC-C14 = 4"x6"

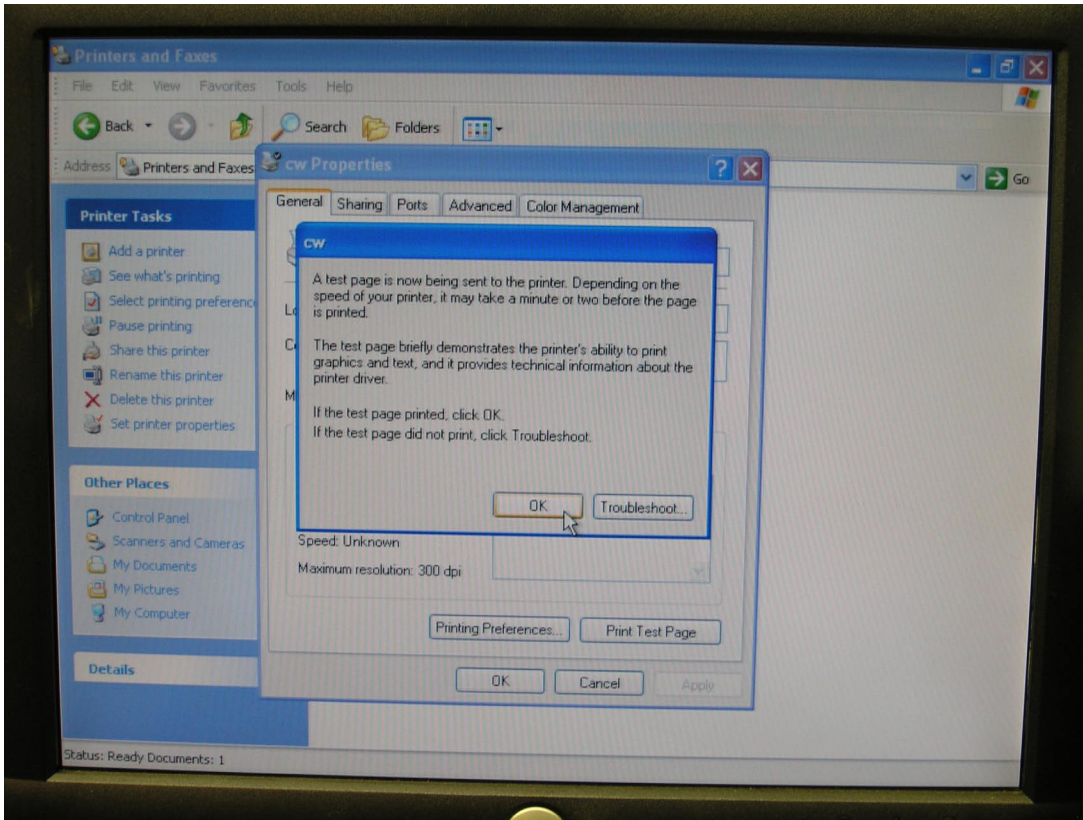
Then click "Apply" to save changes.

Click OK to exit this window.

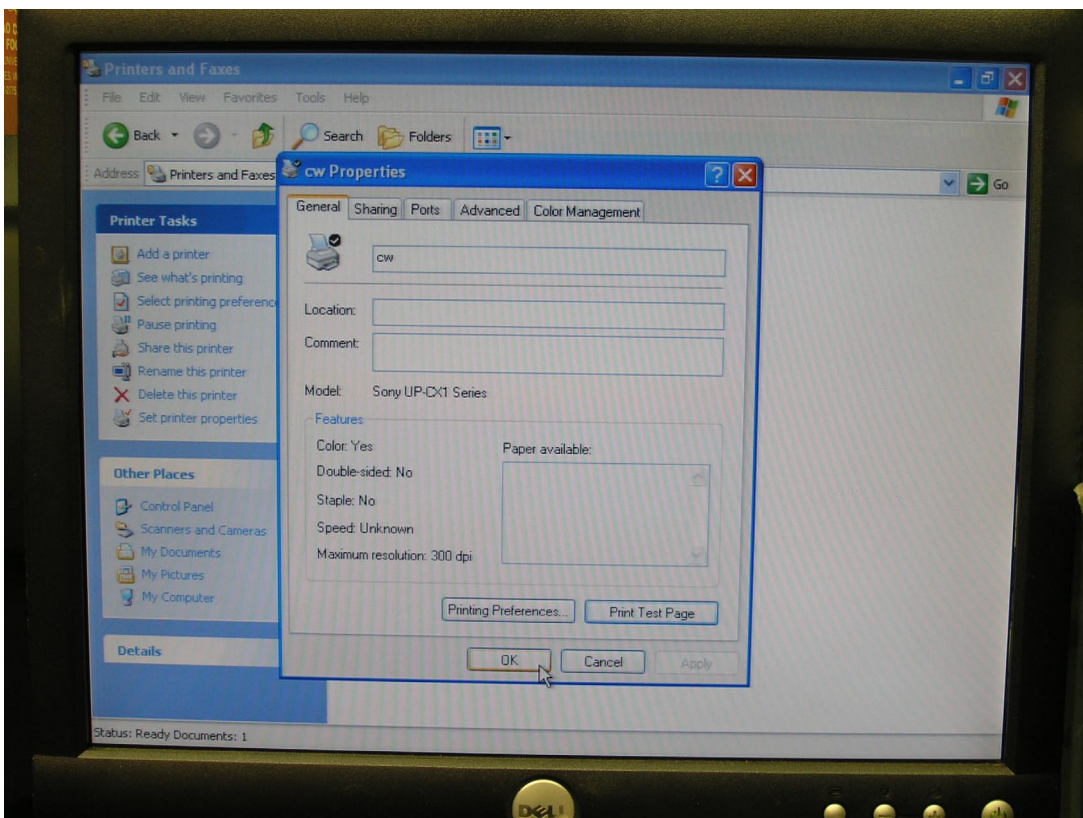


Now, back on the previous window, click "Print Test Page" to make sure your settings are all being recognized.

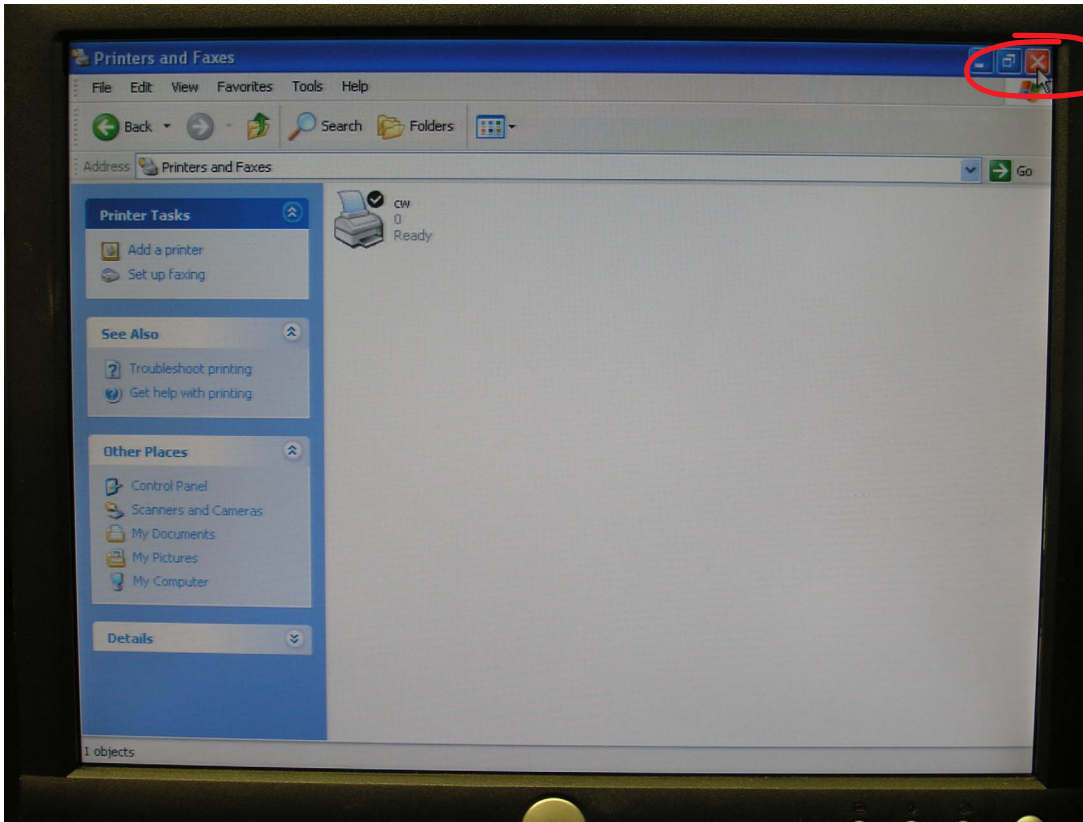




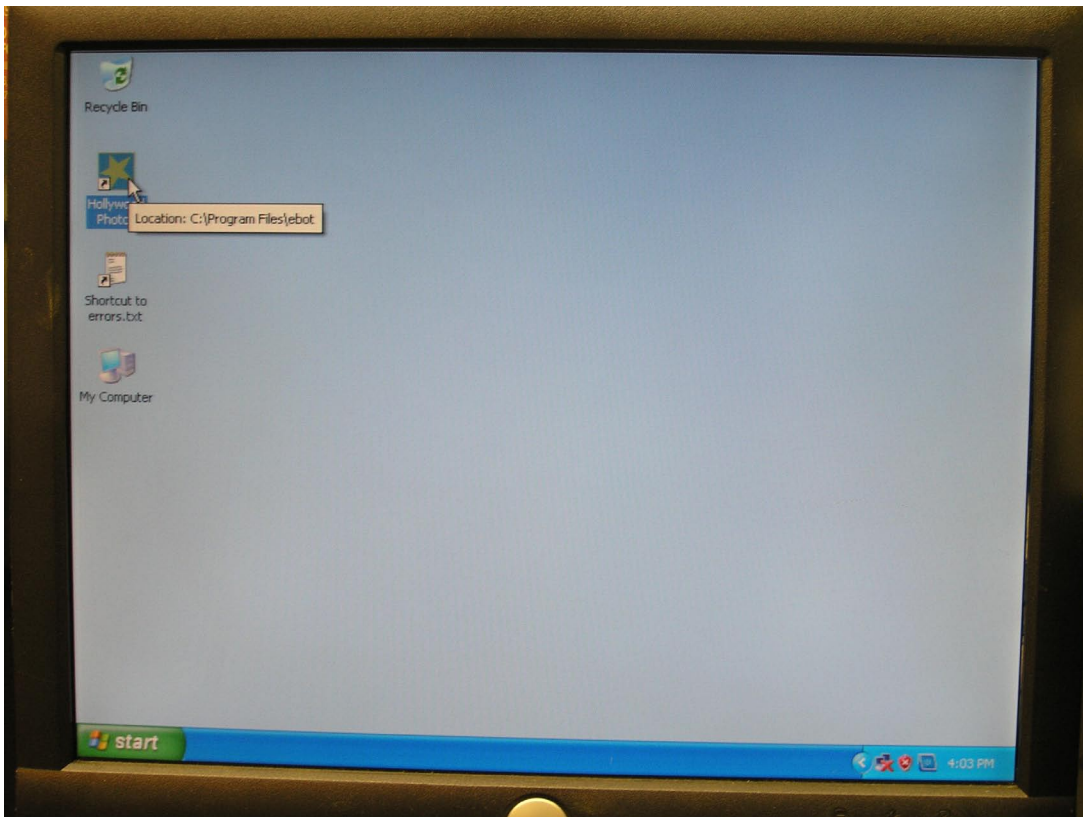
Once the test page prints (even if some of the text runs together or gets cut off), you will see this window. Click OK.



Click OK on this window to exit.



**Click the red "X" in the top right corner of this window to close it.**



**Double-click the Hollywood Photos shortcut icon on the computer Desktop to restart your photo booth program. You should now be able to run the booth and print normally.**